



ProBike

The motorcycle clamping device

Series 815



Operating instructions
Product overview
Motorbike data



GEB 001 155

Table of Contents

| | | |
|------|---|----|
| 1. | Product overview ProBike Series 815 | 2 |
| 1.1 | ProBike for conical mechanical connection | 2 |
| 1.2 | ProBike for cylindrical mechanical connection | 3 |
| 1.3 | ProBike Upgrade kit..... | 4 |
| 2. | The <i>QuickFix</i> rapid clamping unit | 6 |
| 3. | Assembling the clamping device on the wheel balancing machine | 7 |
| 3.1 | Assembly on a wheel balancing machine with a cylindrical shaft connection | 7 |
| 3.2 | Assembly on a wheel balancing machine with a conical shaft connection | 9 |
| 4. | Instructions for using special centering kits | 11 |
| 5. | Variants for wheel centering..... | 16 |
| 6. | ProBike spare parts and accessories | 17 |
| 6.1 | Spare parts | 17 |
| 6.2. | Accessories | 17 |
| 7. | Overview of the Motorbike Data..... | 18 |
| 7.1 | Motorbike Data Tables..... | 18 |

Last updated: December 2016

Subject to technical modifications.

Version 2.0

Figures: HAWEKA AG / D-30938 Burgwedel

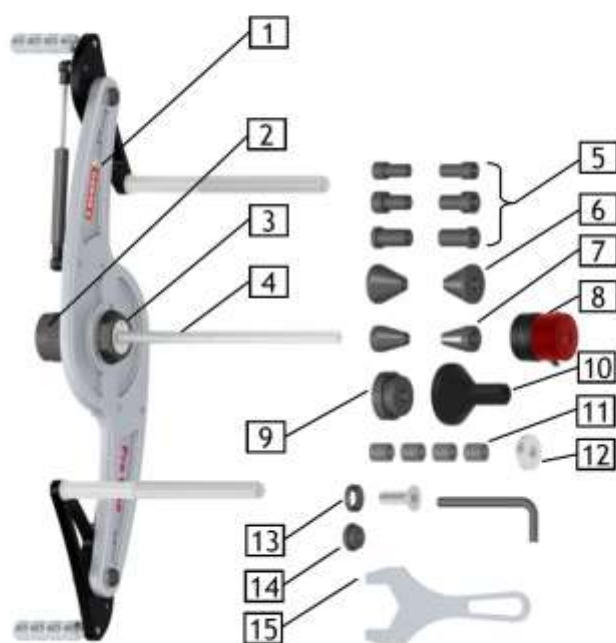
Reproduction in any form is not permitted.

1. Product overview ProBike Series 815

The ProBike motorcycle clamping device forms the basic equipment needed to balance motorcycle wheels with a wheel balancer. Depending on which type of wheel balancing machine on which the ProBike wing is attached, either a cylindrical or a conical insert chuck must be used for the shaft connection.

1.1 ProBike for conical mechanical connection

Article No. 815 818 010



| No. | Item name | Quantity | Article No. |
|-----|---|----------|--------------|
| 1 | ProBike carrier wing | 1 | 803e008 030 |
| 2 | Conical insert chuck | 1 | 803e999 003 |
| 3 | Hexagonal nut M45 x 1.5 | 1 | 803e008 035 |
| 4 | Motorbike shaft Ø 14 mm | 1 | 870e012 140 |
| 5 | Motorbike centering sleeves 15 mm | 2 | 860e140 150 |
| 5 | Motorbike centering sleeves 17 mm | 2 | 860e140 170 |
| 5 | Motorbike centering sleeves 20 mm | 2 | 860e140 200 |
| 6 | Centering cone 16 - 45 mm | 2 | 850e140 006 |
| 7 | Standard centering cone | 2 | 850e140 001 |
| 8 | QuickFix for Ø 14 mm shaft | 1 | 890 140 001 |
| 9 | Centering sleeve Piaggio/Vespa | 1 | 860e140 460 |
| 10 | Polyamide pressure piece for BMW | 1 | 860e140 006 |
| 11 | Spacing sleeves 15 mm | 4 | 860e150 002 |
| 12 | Knurled nut M14 x 1.25 | 1 | 840e140 001 |
| 13 | Mounting bush insert chuck with countersunk bolt DIN7991-M16x40 | 1 | 803e008 034 |
| | | 1 | D07991 16040 |
| 14 | Adapter ProBike Pneumatic | 1 | 803e008 045 |
| 15 | Open-ended spanner | 1 | 990e008 002 |

Figure:
ProBike with conical connection

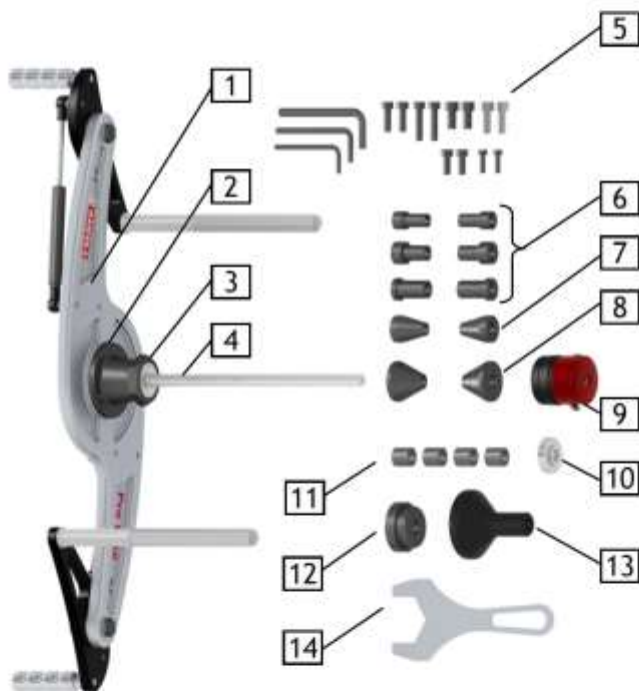
1.2 ProBike for cylindrical mechanical connection

Article No. 815 XX1 010



Note

XX1 = Shaft diameter of the wheel balancing machine (Ø 28 mm -> XX = 28)
 (Ø 36 mm -> XX = 36)
 (Ø 38 mm -> XX = 38)
 (Ø 40 mm -> XX = 40)



| No. | Item name | Quantity | Article No. |
|-----|-----------------------------------|----------|--------------|
| 1 | ProBike carrier wing | 1 | 803e008 030 |
| 2 | Cylindrical insert chuck* | 1 | 803e008 0XX* |
| 3 | Hexagonal nut M45 x 1.5 | 1 | 803e008 035 |
| 4 | Motorbike shaft 14 mm | 1 | 870e012 140 |
| 5 | Fixing kit | 1 | 405 008 003 |
| 6 | Motorbike centering sleeves 15 mm | 2 | 860e140 150 |
| 6 | Motorbike centering sleeves 17 mm | 2 | 860e140 170 |
| 6 | Motorbike centering sleeves 20 mm | 2 | 860e140 200 |
| 7 | Standard centering cone | 2 | 850e140 001 |
| 8 | Centering cone 16 - 45 mm | 2 | 850e140 006 |
| 9 | QuickFix for Ø 14 mm shaft | 1 | 890 140 001 |
| 10 | Knurled nut M14 x 1.25 | 1 | 840e140 001 |
| 11 | Spacing sleeve 15 mm | 4 | 860e150 002 |
| 12 | Centering sleeve Piaggio/Vespa | 1 | 860e140 460 |
| 13 | Polyamide pressure piece for BMW | 1 | 860e140 006 |
| 14 | Open-ended spanner | 1 | 990e008 002 |

Figure:
ProBike with cylindrical connection

* Position 2 varies dependent on the machine model
Article No!

| | |
|----------------------------------|-------------|
| Cylindrical insert chuck Ø 40 mm | 803e008 033 |
| Cylindrical insert chuck Ø 38 mm | 803e008 043 |
| Cylindrical insert chuck Ø 36 mm | 803e008 042 |
| Cylindrical insert chuck Ø 28 mm | 803e008 041 |

The wall board included in the scope of delivery is intended for safe storage of the individual parts as well as storing the carrier wing.

Wall board Article No. 900 008 142

Refer to the separate assembly instructions MAL 900 003 for assembling the wall board.



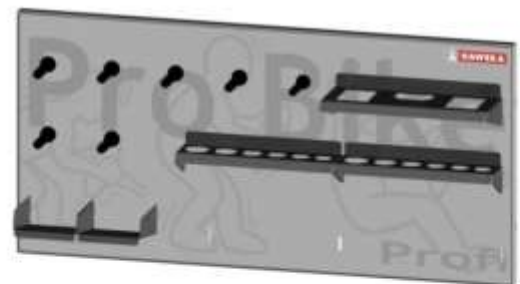
You can upgrade the ProBike motorcycle clamping device individually at any time.

1.3 ProBike Upgrade kit

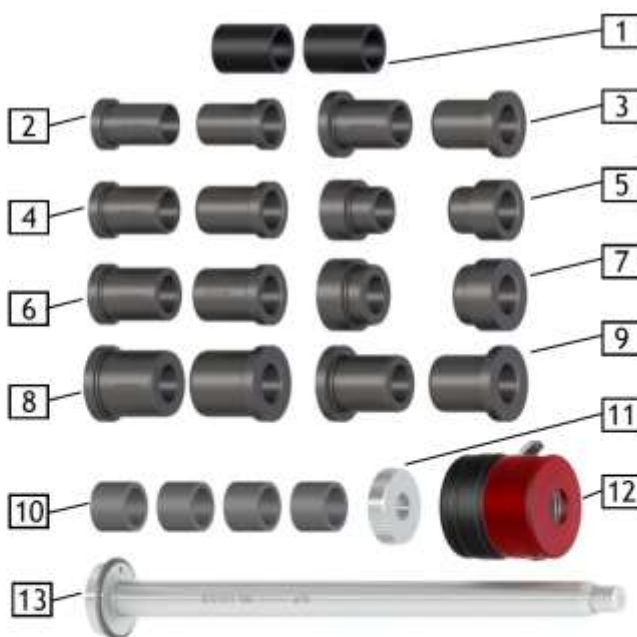
Article No. 815 008 002

Specially approved for heavy motorbike wheels with quick-release axle bearing.

This upgrade kit contains a strengthened motorbike shaft with a 19 mm diameter and the appropriate centering sleeve for various centering ranges up to Ø 35 mm (wheel bearing). A QuickFix for the Ø 19 mm motorbike shaft, spacing sleeves and knurled nut as well as an additional wall board.



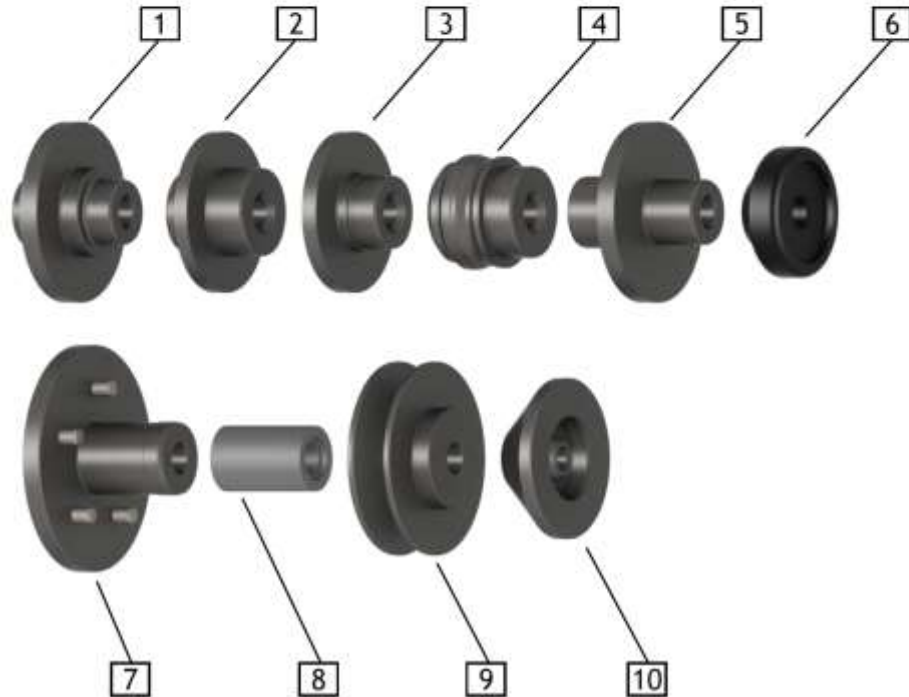
Wall board Article No. 900 008 143



| No. | Item name | Quantity | Article No. |
|-----|-----------------------------------|----------|-------------|
| 1 | Pressure piece Harley Davidson | 2 | 860e190 260 |
| 2 | Centering sleeve Ø 22 mm | 2 | 860e190 220 |
| 3 | Centering sleeve Ø 26 mm | 2 | 860e190 261 |
| 4 | Centering sleeve Ø 25.4 mm | 2 | 860e190 254 |
| 5 | Centering sleeve Ø 25 mm Suzuki | 2 | 860e190 250 |
| 6 | Centering sleeve Ø 28 mm | 2 | 860e190 280 |
| 7 | Centering sleeve Ø 32 mm Suzuki | 2 | 860e190 320 |
| 8 | Centering sleeve Ø 35 mm | 2 | 860e190 350 |
| 9 | Centering sleeve Ø 30 mm | 2 | 860e190 300 |
| 10 | Spacing sleeve (Internal Ø 20 mm) | 4 | 860e200 002 |
| 11 | Knurled nut M14 x 1.25 | 1 | 840e140 001 |
| 12 | QuickFix for Ø 19 mm shaft | 1 | 890 190 001 |
| 13 | Motorbike shaft Ø 19 mm | 1 | 870e012 190 |

The Profi-Kit for mono lever models has a much more individualised handling behaviour and provides you with possibility to also balance motorbike wheels from vehicles with mono lever.

Article No. 815 008 003



| No. | Item name | Quantity | Article No. |
|-----|--|----------|-------------|
| 1 | Centering sleeve DUCATI / TRIUMPH | 1 | 860e190 004 |
| 2 | Centering sleeve MV AGUSTA/HONDA | 1 | 860e190 011 |
| 3 | Centering sleeve HONDA GL 1800 / NTV 650 | 1 | 860e190 018 |
| 4 | Centering sleeve APRILIA/BMW / YAMAHA | 1 | 860e190 012 |
| 5 | Centering sleeve TRIUMPH/ HONDA VFR1200 | 1 | 860e190 024 |
| 6 | Pressure piece | 1 | 850e190 007 |
| 7 | Centering flange KTM Superduke + TRIUMPH | 1 | 860e190 022 |
| 8 | Spacing sleeve, long | 1 | 860e190 007 |
| 9 | Centering disc BMW II (from year of manufacture 2005) also R 1200 GS | 1 | 860e190 020 |
| 10 | Centering disc BMW I (from year of manufacture 2005) apart from R 1200 GS, Moto Guzzi (from 2008) (Internal Ø 14 mm) | 1 | 860e140 015 |

2. The *QuickFix* rapid clamping unit

The *QuickFix* rapid clamping unit can be utilised for all **ProBike** motorcycle clamping devices. Utilising the *QuickFix* rapid clamping unit makes clamping motorbike wheels child's play.



Tightening with the knurled nut can be omitted.



The **QuickFix** is pushed onto the shaft and the wheel is thereby pressed against the spacing sleeve. To create correct centering, it is necessary to subsequently tighten the black plastic ring of the **QuickFix** against the centering unit in a clockwise direction.



Note

A safe fixing is only guaranteed when the counter pressure is achieved for the black plastic ring against the wheel.

Once the application has been completed, simply loosen the black plastic ring from the **QuickFix** (rotate it anti-clockwise), actuate the toggle lever and remove the **QuickFix** from the shaft again.

For motorbike shafts Ø 14 mm Article No.: 890 140 001
 For motorbike shafts Ø 19 mm Article No.: 890 190 001



3. Assembling the clamping device on the wheel balancing machine

3.1 Assembly on a wheel balancing machine with a cylindrical shaft connection

Dismantle the middle shaft from the main body



Actuate the foot brake (when present) and, depending on which machine model, loosen the middle shaft from the main body with a suitable tool (socket wrench or screwdriver).



Assembling the ProBike carrier wing on the main body



Attach the ProBike carrier wing onto the main body and insert the fixing bolts into the main body from the rear. Then tighten the bolts evenly with the hexagonal spanner.



Always ensure that the carrier wing is secured flush on the main body.

Note

Assembling the shaft on the ProBike carrier wing



Insert the mounting shaft in the insert chuck of the carrier wing.

Firstly tighten the union nut manually and then lightly tighten the union nut with the supplied open-ended spanner.



Always ensure that the mounting shaft is not inserted at an angle into the chuck.

Note

Mounting the wheel on the ProBike carrier wing



There are various methods for fixing the wheel depending on the motorbike model. Always utilise the suitable centering sleeves or centering discs to clamp the wheel correctly! A wheel fixing with a quick-release axle is shown in the example.

Note



Insert the respective centering sleeves from both sides into the middle hole of the wheel.



The direction of assembly for the wheel must be selected in such a way that the largest dimension of the wheel (in this case the side with the brake disc) is pointing towards the carrier wing.



Depending on the characteristic of the rim, a various quantity of spacing sleeves are required for fixing.

The **QuickFix** will be pushed onto the shaft and pressed tightly against the wheel. The complete centering unit will subsequently be secured by rotating the black plastic ring on the QuickFix.



Finally the carrier from the wing will be folded onto the wheel.

Control: If the wheel is assembled tightly, then it may not rest laterally on the carrier wing!





In order to achieve the best possible results, the wheel will be assembled as close as possible to the side of the machine. Always ensure that the flank of the wheel does not come in contact with the carrier wing and is only inserted onto the shaft via the centring device.

3.2 Assembly on a wheel balancing machine with a conical shaft connection



Loosen the hexagonal socket bolt in the middle shaft

Remove the main body from the machine connection.



Attach the ProBike carrier wing onto the conical shaft end and tighten it with the hexagonal socket bolt including the disc (bevel washer) on the machine connection.



Insert the mounting shaft in the insert chuck of the carrier wing.

Firstly tighten the union nut manually and then lightly tighten the union nut with the supplied open-ended spanner.





There are various methods for fixing the wheel depending on the motorbike model. Always utilise the suitable centering sleeves or centering discs to clamp the wheel correctly! This example shows how a wheel is secured with a mono lever.



The centering disc required for this wheel is then pushed onto the shaft.

The vehicle degree is then subsequently applied and the wheel hub is clamped on the centering disc.



Position the pressure piece on the outer side of the rim.

Depending on the characteristic of the rim, a various quantity of spacing sleeves are required for fixing.



The centering unit will be clamped tightly with the knurled nut.

Control: If the wheel is assembled tightly, then it may not rest on the carrier wing! If this is the case, then spacing sleeves must be inserted between the wing and the centering disc.



4. Instructions for using special centering kits



You already have a ProBike clamping device and would like to balance motorbike wheels with a mono lever. If this is the case, then you will need the ProBike Upgrade Kit 815 008 003 (Page 5).

The special centering kit has been re-modified and optimised so that it is now suitable for a wider range of various motorbike wheels.

The special clamping devices from the Upgrade Kits 815 008 002 and 815 008 003 will be assembled on a \varnothing 19 mm motorbike shaft, except for one exception (860e140 015).

If you need just one specific special centering kit, then of course you can also buy them individually.



Note

If you are using individual kits, you will also need the \varnothing 19 mm motorcycle shaft and, as an option, a 19 mm QuickFix!

Differences in the shaft lengths:

Article No. 870e012 190 = Standard length, 300 mm

Article No. 870e012 191 = Extra-long, 365 mm

\varnothing 19 mm QuickFix Clamping System Article No. 890 190 001



\varnothing 19 mm shaft (870e012 190) and QuickFix are supplied with the Upgrade Kit 815 008 002!

The following pages contain some application examples for assembling the various clamping elements.

APRILIA

RST Futura (2001 - 2003)

BMW

F 650 CS Scarver (2002 - 2003)

YAMAHA

GTS 1000 (1993 - 1999)

For rear wheel mounting
(can be utilised from both sides!)

1 x Centering Sleeve Article No. 860e190 012

1 x Pressure Piece Article No. 850e190 007

(Supplied with Upgrade Kit 815 008 003)



HONDA

GL 1800 Gold Wing

NTV 650 Revere

For rear wheel mounting
(can be utilised from both sides!)

1 x Centering Sleeve Article No. 860e190 018

1 x Pressure Piece Article No. 850e190 007

(Supplied with Upgrade Kit 815 008 003)



BMW

BMW motorbikes with mono lever up to
year of manufacture 2005
(apart from R 1200 GS)

MOTO GUZZI

Moto Guzzi from year of manufacture
2008 with new drive unit

For rear wheel mounting

1 x Centering Disc Article No. 860e140 015

(Supplied with Upgrade Kit 815 008 003)

1 x Pressure Piece Article No. 860e140 006

(Supplied with ProBike 815 xxx 010)



BMW

BMW motorbikes with mono lever
from year of manufacture 2005
BMW R 1200 GS (2004 -)

For rear wheel mounting
(can be utilised from both sides!)

1 x Centering Disc Article No. 860e190 020

1 x Pressure Piece Article No. 850e190 007

(Supplied with Upgrade Kit 815 008 003)



DUCATI

748 (up to 2003)
 848 (from 2008)
 916 (1995 - 2003)
 996 (1998 - 2001)
 998 (2002 - 2003)
 1098 (2007 - 2009)
 1198 (2009 - 2011)
 1199 Panigale (2012-)
 Diavel (2011 -)
 Hypermotard 1100 / S (2007 -)
 Hypermotard 796 (from 2010 -)
 Monster 1100 / S / EVO (2009 -)
 Monster 796
 Monster S2R / S4R (from 2007 -)
 Multistrada (2007 - 2009)
 Multistrada 1200 (2011 -)
 Streetfighter / S (2010 -)
 Streetfighter 848 (2012 -)



For rear wheel mounting

(can be utilised from both sides!)

1 x Centering Sleeve Article No. 860e190 004

1 x Pressure Piece Article No. 850e190 007

(Supplied with Upgrade Kit 815 008 003)

HONDA

VFR 1200

TRIUMPH

Sprint ST 1050 (2005 - 2011)
 Sprint RS (from 2004)
 Speed Triple 1050 (up to 2010)
 Daytona 955i
 T 509
 T 595



For rear wheel mounting

(can be utilised from both sides!)

1 x Centering Sleeve Article No. 860e190 024

1 x Pressure Piece Article No. 850e190 007

(Supplied with Upgrade Kit 815 008 003)

TRIUMPH

Sprint GT (2011 -)
Speed Triple (2011 -)



TRIUMPH

Tiger Explorer (2012 -)
Tiger Explorer XC (2013 -)



KTM

Super Duke (2011 -)

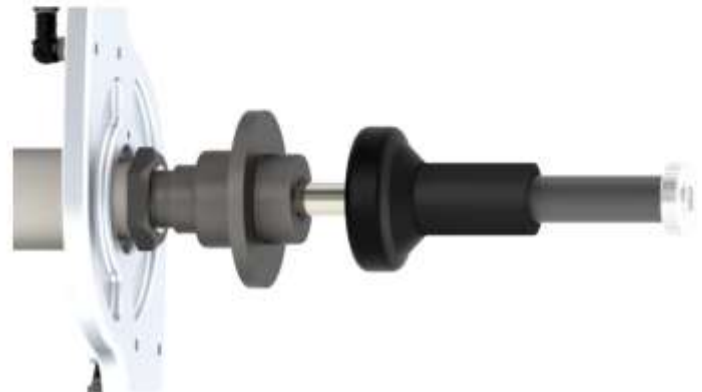
For rear wheel mounting
(can be utilised from both sides!)
1 x Centering Flange Article No. 860e190 022
1 x Pressure Piece Article No. 850e190 007
(Supplied with Upgrade Kit 815 008 003)

MV AGUSTA

All models (from 2000)

HONDA

VFR 750
VFR 800
VFR V-TEC
Crossrunner (2011 -)
CB 1000 R (2008 -)



For rear wheel mounting (can be utilised from both sides!)
1 x Centering Sleeve Article No. 860e190 011
1 x Pressure Piece Article No. 850e190 007
(Supplied with Upgrade Kit 815 008 003)

For front wheel mounting **MV AGUSTA**
1 x Centering Sleeve Kit: Article No. 860 190 350
(Supplied with Upgrade Kit 815 008 002)



HARLEY-DAVIDSON

| | |
|-----------------------|-----------------------|
| Bad Boy | Softail Springer |
| Dyna Super Glide | Sportster 883 ST |
| Dyna Glide Low Rider | Sportster 883 Hugger |
| Dyna Glide Conv. | Sportster 1200 |
| Dyna Wide Glide | Sportster 1200 Custom |
| Electra Glide Classic | Sportster 1200 Sport |
| Fat Boy | |

Heritage Softail Classic
Softail Deuce
Heritage Springer
Night Train
Softail Custom
Softail Standard

For front and rear wheel mounting

2 x Pressure Piece: Article No. 860e190 260

(Supplied with Upgrade Kit 815 008 002)



**Additional for Harley Davidson
Models as of year of manufacture 2008**

For front and rear wheel mounting

2 x Centering Sleeve: Article No. 860e190 250

(Supplied with Upgrade Kit 815 008 002)



HARLEY-DAVIDSON

V-Rod

For front and rear wheel mounting

2 x Centering Sleeve: Article No. 860e190 254

(Supplied with Upgrade Kit 815 008 002)



SUZUKI

GSX-R 600
GSX-R 750
GSX-R 1000
GSX R 1300 HAYABUSA

For front and rear wheel mounting

2 x Centering Sleeve: Article No. 860e190 320

2 x Centering Sleeve: Article No. 860e190 250

2 x Centering Sleeve: Article No. 860e190 280

(Supplied with Upgrade Kit 815 008 002)



5. Variants for wheel centering

Application examples:



Wheel centering

Centering shaft \varnothing 14 mm
with centering cones



Wheel centering

Centering shaft \varnothing 14 or 19 mm
with centering sleeves



Wheel centering

Centering shaft \varnothing 19 mm
with the same \varnothing as the vehicle's
quick-release axle (Harley Davidson)



Wheel centering

Centering shaft \varnothing 14 or 19 mm
with special centering kit

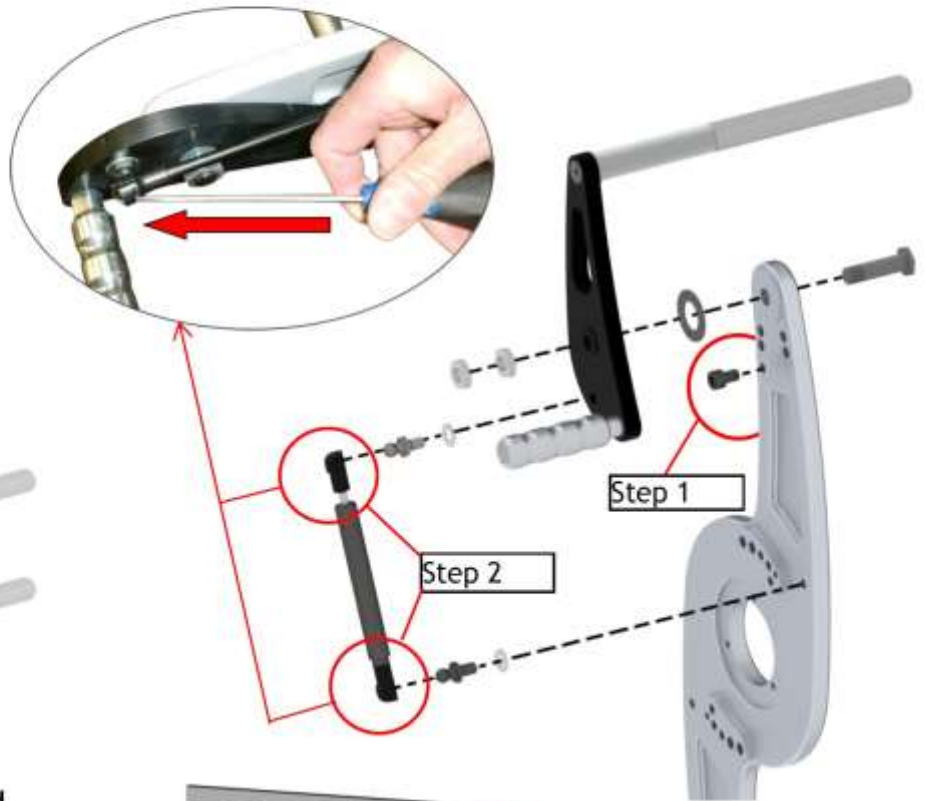
6. ProBike spare parts and accessories

6.1 Spare parts

Gas pressure spring
Article No. DU GA150252250

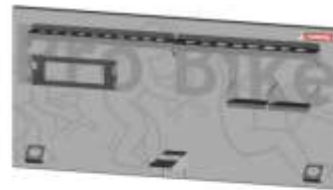


Outrigger
Article No. 803e008 027
2 Units

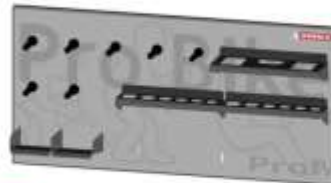


6.2. Accessories

ProBike Standard wall board
Article No.: 900 008 142



ProBike Profi wall board
Article No.: 900 008 143



Wall board stands
Article No.: 900e008 190



Example of application