

COMPANY OVERVIEW





INDEX

Who we are

Headquarters

History

Values

Certificates

Products

Railways

Automotive

Ergonomic positioners

Main customers



WHO WE ARE

Since more than 100 years, Emanuel is one the world leader company in the lifting equipment sector.

The EMANUEL Company is a dynamic reality, shared in a different departements.

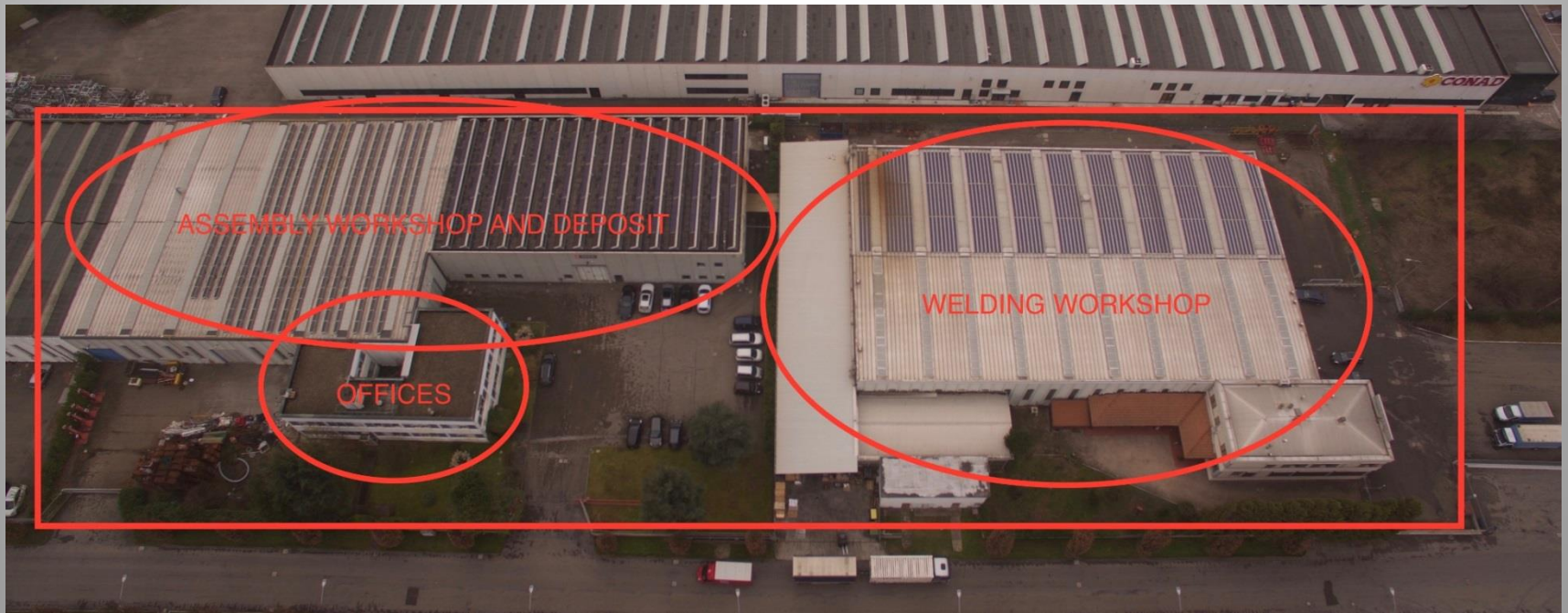
The close collaboration between them allow to give competence and high quality and service.



HEADQUARTERS

Company working areas

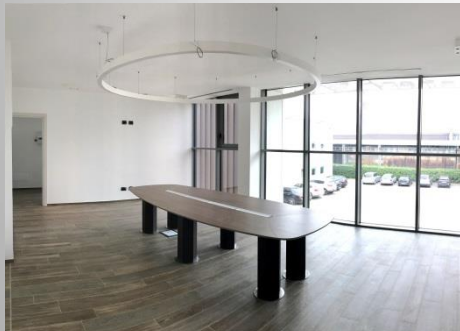
- 5000 m²/ 54000 sq feet



OFFICES

New office working areas

- *Administrative Dept , Sales Dept, Production Dept and Tecnical Office*
- *500 mq / 5400sq feet*



WELDING WORKSHOP

In order to guarantee the highest quality and attention during production, all the structures are welded internally in our welding workshop.

The most critical material is always on stock in order to reduce delivery at the minimum.



ASSEMBLY WORKSHOP

Once all the Emanuel products have been painted the assembly process starts in our two assembly workshops.

All the handling, mechanical parts and electric parts are installed on the products by specialized operators.

All the mechanical, hydraulic and electric critical components are always kept on stock to reduce the delivery time.



TESTING MACHINES

All columns are subjected to a series of tests under our testing machines, in order to verify the complete compliance with the EN 1493 (2010) directive.

We use a special **two** special machines manufactured by us. A computerized electronic control unit manages the data originated from a load cell which interfaces itself with a hydraulic control unit, equipped with special proportional valves and a pump with variable capacity. The maximum achievable capacity is higher than **100 metric tons**.





HISTORY

Emanuel was funded in **1899** in Turin, Italy with the name “Società Commerciale Giovanni Emanuel & Comp”.

During the oil crisis in **1974**, EMANUEL was forced to close the factories in Turin and the company was then moved to Bologna where a new production of lifting equipment and car wash plants began.

Since **1980** EMANUEL started specializing in the industrial vehicles lifting equipment's. The main focus of the company has always been to offer a reliable, high quality product and to offer a good service to all its clients.

In the recent years Emanuel has been focusing on investing on improvement and extend the range of its products.

The turn over is improving year by year, this testifies the high appreciation of EMANUEL products internationally and nationally.

VALUES

CUSTOMIZATION

At EMANUEL we are able to customize our products in order to fulfill the requirements of our costumers. For this reason it has never failed to approach new lifting projects, looking for the best solution that could be the most accurate and compliant to the costumer necessities.

EMANUEL has been always devoted to costumer satisfaction. In order to satisfy their needs we are organized, able to plan and optimize new projects and deliver and install the equipment promptly.



VALUES

MISSION

To expand our global presence, thanks to the expansion and innovation of our products.

We are always looking forward at new technologies, with respect to the environment

ETHICS

EMANUEL has invested in the installation of the big solar panel system, that will make industrial work more sustainable and with less impact on the environment.



CERTIFICATIONS



EN ISO 15609-1. This certification guarantees high quality standards of every structure that is welded inside our workshops.



ISO 9001-2015 Certification EAC Certification for Russia



PRODUCTS

- RAILWAYS
- AUTOMOTIVE
- ERGONOMIC POSITIONERS



RAILWAY SECTOR PRODUCTS

- SCM Railway Jacks
- CSF Lifting Boogie Platform



RAILWAY SECTOR PRODUCTS

Equipment that has been supplied



RAILWAY SECTOR PRODUCTS

Equipment that has been supplied



AUTOMOTIVE SECTOR PRODUCTS

- MCL Mobile Columns
- SM Platform Lifts
- Axle Stands



AUTOMOTIVE SECTOR PRODUCTS

Equipment that has been supplied



ERGONOMIC POSITIONERS

ST Ergonomic Positioners

Versions

- STR
- STF
- STX
- STS



ERGONOMIC POSITIONERS

Equipment that has been supplied



MAIN CUSTOMERS

- *Alstom*
- *Bombardier*
- *Siemens*
- *Pesa*
- *Ansaldo Breda*
- *Hitachi*
- *CAF*

The logo for ALSTOM, with the word 'ALSTOM' in blue capital letters and a red circle around the letter 'O'.The logo for BOMBARDIER, with the word 'BOMBARDIER' in bold black capital letters above the tagline 'the evolution of mobility' in a smaller black font.The logo for SIEMENS, with the word 'SIEMENS' in bold, blue capital letters.



THANK YOU