

## MTR

### RUNNING EARTHS

GROUNDING DEVICE DESIGNED FOR ROPES AND CONDUCTORS DURING STRINGING OPERATIONS. IT IS EQUIPPED WITH A COPPER GROUNDING WIRE (50 MM<sup>2</sup> SECTION, 6 M LONG) FOR CONNECTION TO THE GROUND. DESIGNED FOR 10 KA EFF / 0.4 S SHORT CIRCUIT LEVEL.

#### CHARACTERISTICS

WEIGHT	6 Kg
GROOVE WIDTH	55 mm

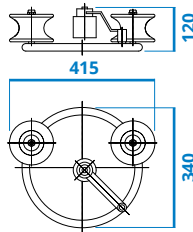
#### CHARACTERISTICS

WEIGHT	16 Kg
GROOVE WIDTH	70 mm

Suitable for anti-twisting device model RFF001



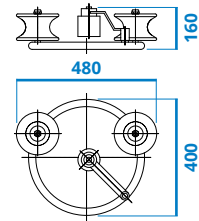
MTR001



MTR001

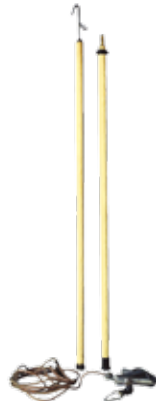


MTR052



## MTF

### GROUNDING DEVICES



MTF015

#### MTF015

for high voltage lines (130/220 kV)

The device is made of:

- 3 light aluminium alloy screw pliers for clamping conductors with diameter 5÷30 mm
- 3 copper wires insulated with transparent thermoplastic material, section 1x50 mm<sup>2</sup>, total length 6 m each
- 3 ground clamps
- 1 high insulating fibre glass stick, total length 3 m
- designed for 11.25 kA eff / 1 s short circuit level

#### MTF016

for extra high voltage lines (400/500 kV)

The device is made of:

- 3 light aluminium alloy screw pliers for clamping conductors with diameter 5÷60 mm
- 3 copper wires insulated with transparent thermoplastic material, section 1x50 mm<sup>2</sup>, total length 8 m each
- 3 ground clamps
- 1 high insulating fibre glass stick total length 4.5 m
- designed for 11.25 kA eff / 1 s short circuit level



MTF035

#### MTF035

for high voltage lines (60 kV)

The device is made of:

- 3 light aluminium alloy screw pliers for clamping conductors with diameter 3 ÷ 32 mm
- 2 copper wire insulated with transparent thermoplastic material, section 35 mm<sup>2</sup>, total length 2.5 m each
- 1 ground clamp
- 1 high insulating fiber glass stick, total length 3 m
- designed for 8.6 kA eff/ 1 s short circuit level
- 1 ground cable copper wire insulated with transparent thermoplastic material, section 16 mm<sup>2</sup>, total length 16 m
- Metallic box